

Dealing with Legacy Code

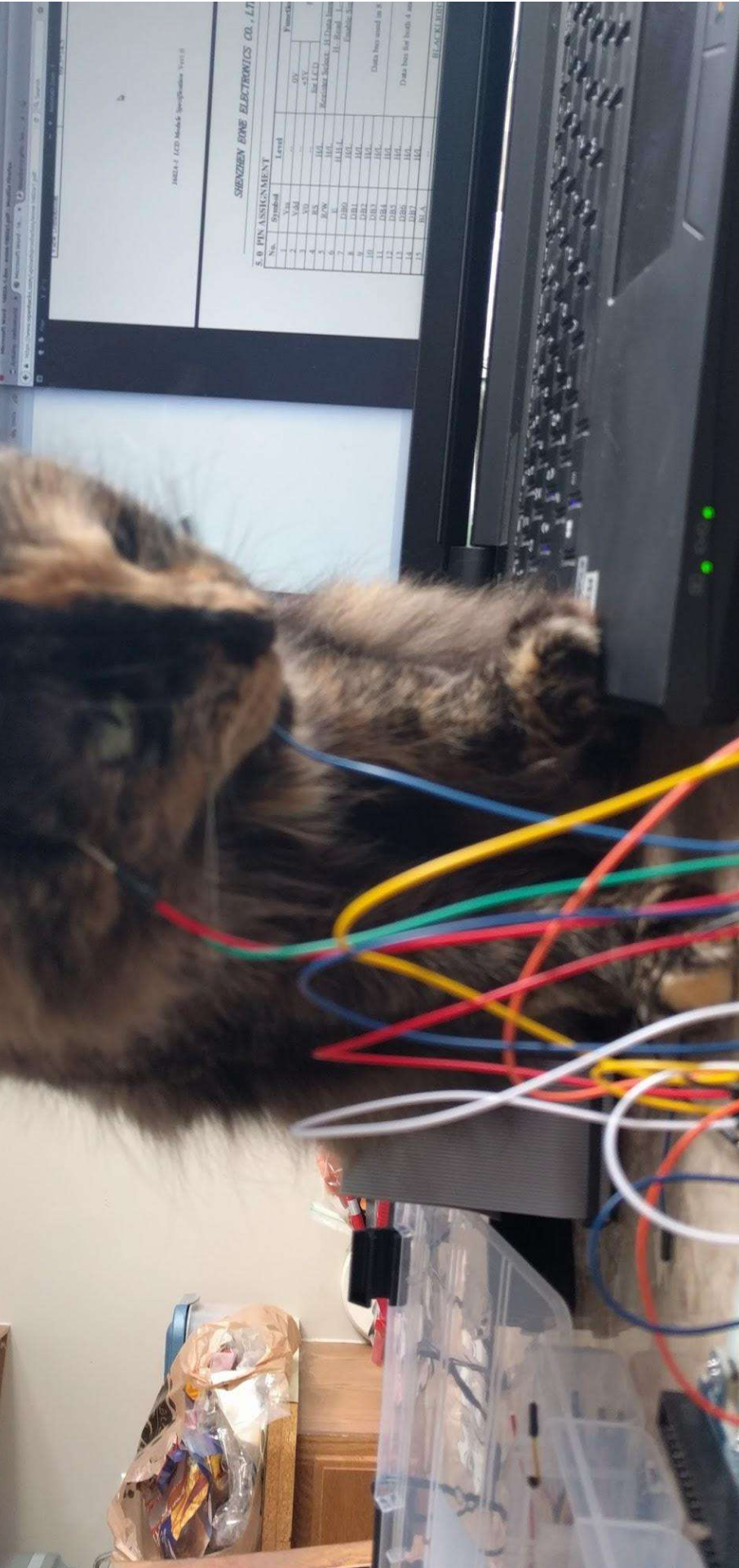
“Past me was not only an idiot, but overly generous with present me’s time.”

-V. M. Brasseur



Here Be Dragons





SIENZHEN EINE ELECTRONICS CO., LTD.

TABLE 4 LCD Module Specifications Ver.0

5.0 PIN ASSIGNMENT

| No. | Designated | Level | Function |
|-----|------------|-----------------|--------------------------------|
| 1 | VDD | V _{CC} | |
| 2 | VDD | V _{CC} | |
| 3 | V0 | 0V | |
| 4 | V0 | 0V | |
| 5 | R/W | H/L | Read/Write Enable (Active Low) |
| 6 | R | H/L | Read Enable (Active Low) |
| 7 | W | H/L | Write Enable (Active Low) |
| 8 | D0 | H/L | Data Bus |
| 9 | D1 | H/L | Data Bus |
| 10 | D2 | H/L | Data Bus |
| 11 | D3 | H/L | Data Bus |
| 12 | D4 | H/L | Data Bus |
| 13 | D5 | H/L | Data Bus |
| 14 | D6 | H/L | Data Bus |
| 15 | D7 | H/L | Data Bus |

Notes: 1. Data bus used as 8-bit.

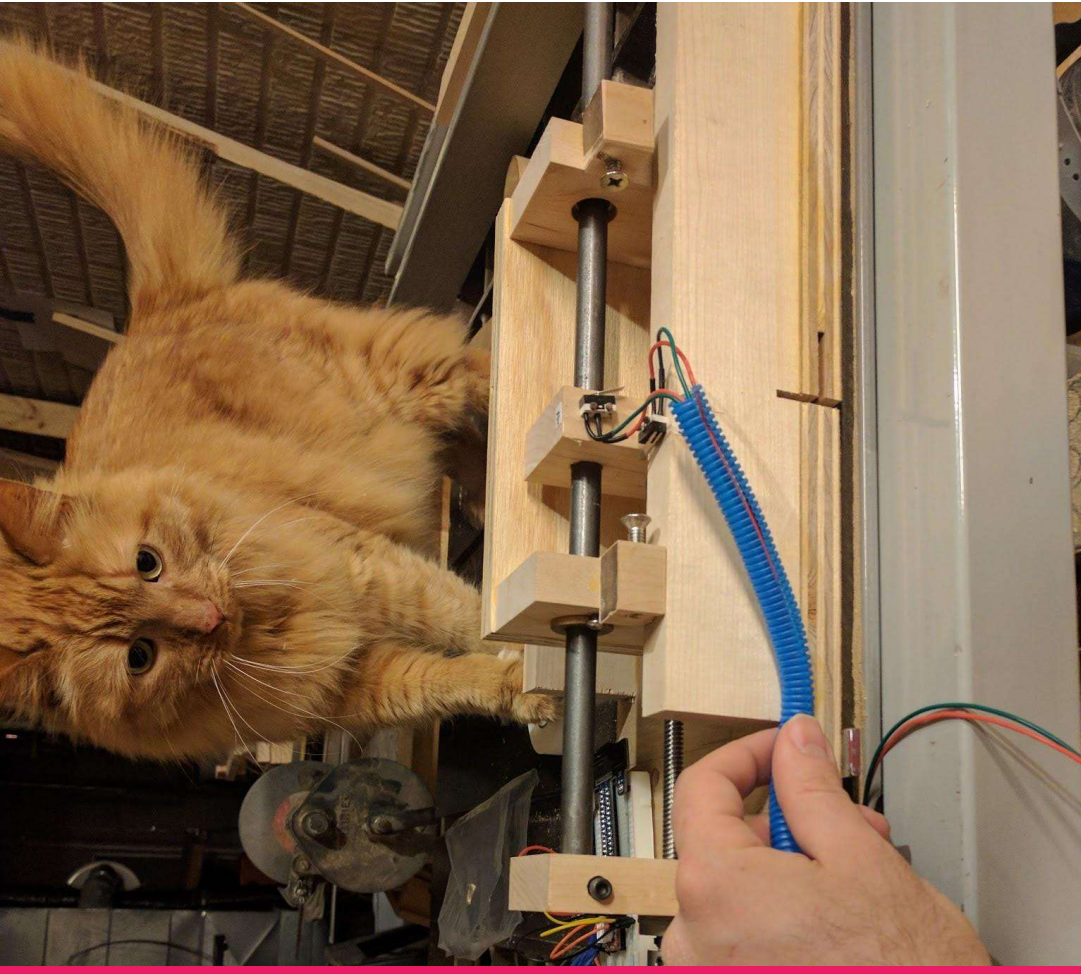
2. Data bus for both V and H.

3. BLA, BLB

Trust, But Verify

Test First

Don't Make New Dragons



Red Green Refactor

Red - Write a failing test.

Green - Make the test pass.

Refactor - Make the code cleaner.

The Red Green Show



Breaking Changes



A photograph of a dog lying on a wooden floor. The dog is dark-colored with some lighter patches, and it is lying down, looking towards the camera. The floor is made of light-colored wood planks.

Branch By Abstraction

Implement breaking changes
without breaking the
build.

Define Your New Interface

Implement The Interface

Use Your Interface
Incrementally

Hide Deprecated
Implementation

Add New Functionality



Live Demo

<http://localhost:8080/f?name=LegacyCode&user=che>

Retrospective



What worked?

What didn't?

Thank You

Clay Dowling & Mark Henke